

Hose recovery in mining: learning from our fire brigades.

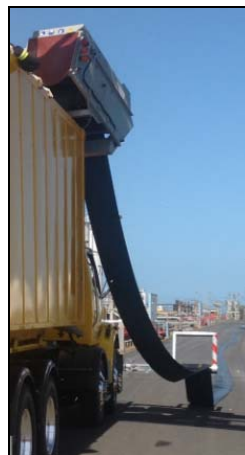
Click on photos for brief videos.



Mining operations need water, need to dispose of water, need to transport water from A to B and need to deal with and transport contaminated water. And mining methods such as coal seam gas, where water transport requirements are often temporary, a fixed water transport infrastructure is an expensive option.

The US leads by using large lay flat hoses (up to 300mm) to create a temporary above ground water transport system often over many kilometres. A solution with minimal impact on the environment and kind to the budget. But how do you pick up these large hoses afterwards?

Fire brigades and industrial emergency services around the world lead the way: they recover hose mechanically and with little manpower with the Hytrans Hose Recovery Unit. Pick-up, re-deploy, pick-up, re-deploy. Easy.



Please click [here](#) to receive more information.
Visit the [Bluemont website](#) or contact Justin Bear at +61 2 9091 0360.